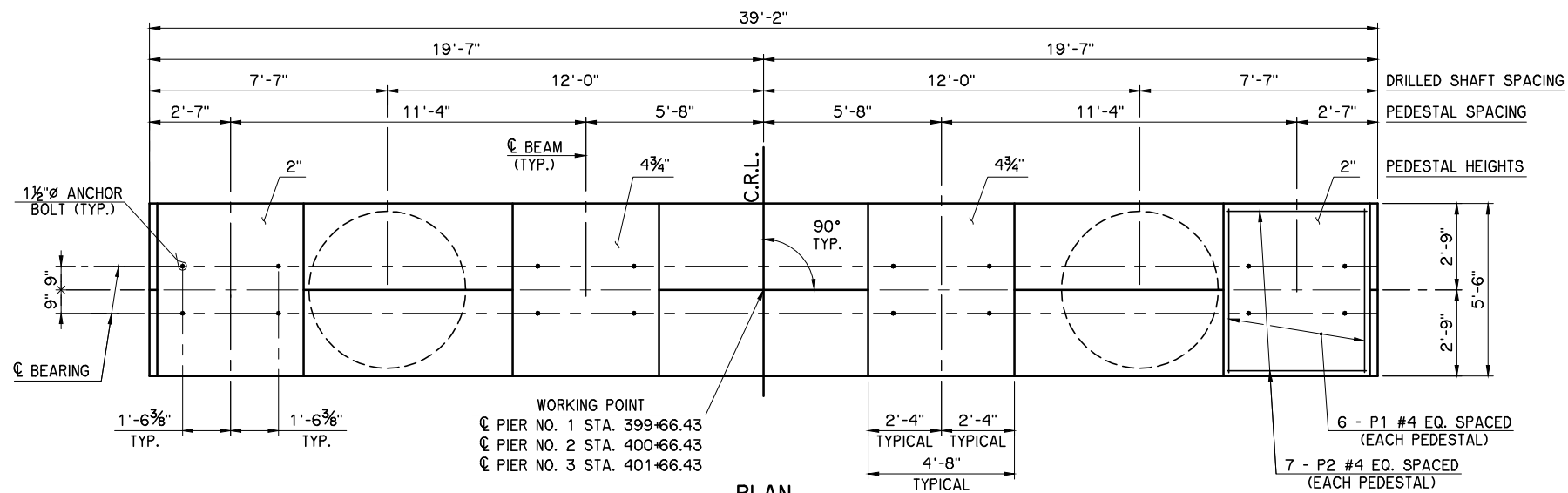
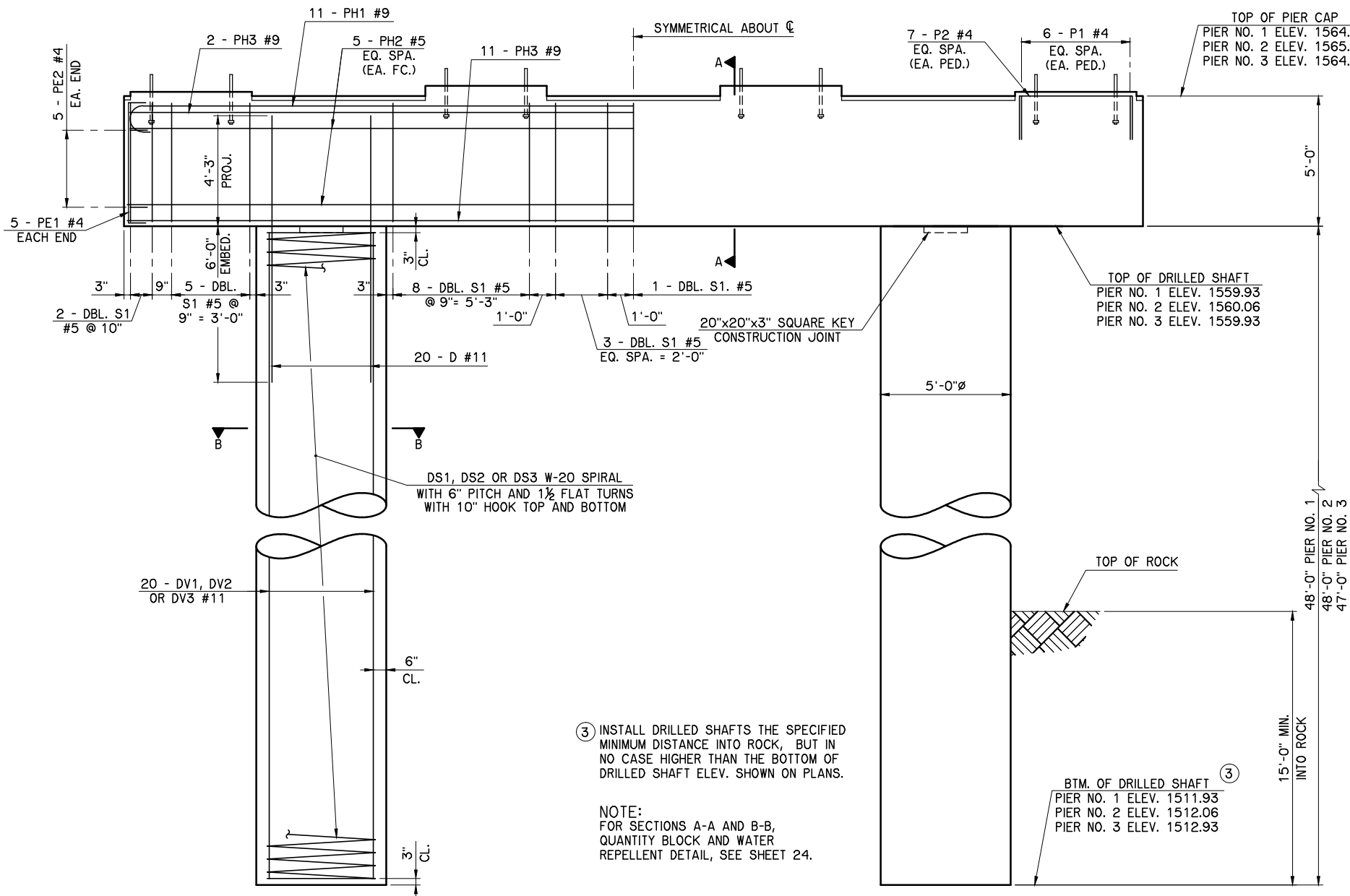


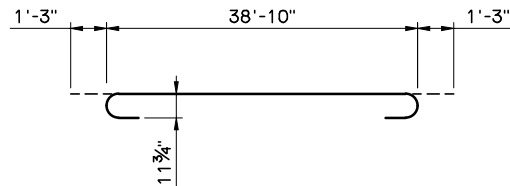
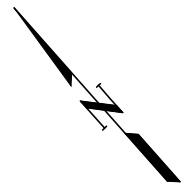
I:\Active\1221\DWG\23-Pier.dwg, 3/15/2016 11:19:27 AM, Deanne



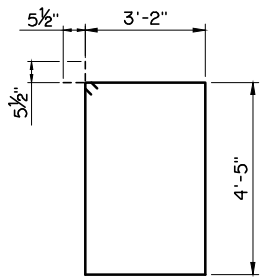
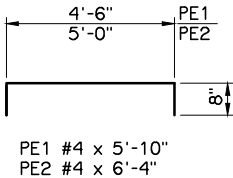
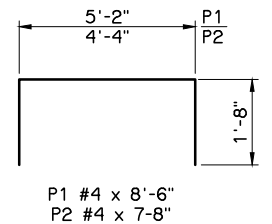
PLAN



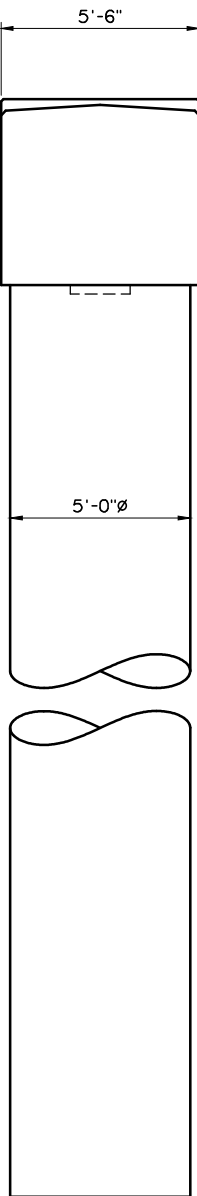
ELEVATION



PH1 #9 x 41'-4"



S1 #5 x 16'-1"



END VIEW

REVISIONS		
REV. NO.	DESCRIPTION	DATE

PIER CAP BAR LIST				
ONE SHOWN, THREE REQUIRED				
MARK	SIZE	NO.	FORM	LENGTH
EPOXY COATED REINFORCING				
P1	#4	24	BNT	8'-6"
P2	#4	28	BNT.	7'-8"
PE1	#4	10	BNT.	5'-10"
PE2	#4	10	BNT.	6'-4"
PH1	#9	11	BNT.	41'-4"
PH2	#5	10	STR.	38'-10"
PH3	#9	13	STR.	38'-10"
S1	#5	74	BNT.	16'-1"

DRILLED SHAFT BAR LIST				
PIER NO. 1				
MARK	SIZE	NO.	FORM	LENGTH
EPOXY COATED REINFORCING				
D	#11	40	STR.	10'-3"
PLAIN REINFORCING				
DS1	W20	2	BNT.	1222'-8"
DV1	#11	40	STR.	47'-6"

DRILLED SHAFT BAR LIST				
PIER NO. 2				
MARK	SIZE	NO.	FORM	LENGTH
EPOXY COATED REINFORCING				
D	#11	40	STR.	10'-3"
PLAIN REINFORCING				
DS2	W20	2	BNT.	1222'-8"
DV2	#11	40	STR.	47'-6"

DRILLED SHAFT BAR LIST				
PIER NO. 3				
MARK	SIZE	NO.	FORM	LENGTH
EPOXY COATED REINFORCING				
D	#11	40	STR.	10'-3"
PLAIN REINFORCING				
DS3	W20	2	BNT.	1197'-9"
DV3	#11	40	STR.	46'-6"

- ① LENGTH SHOWN DOES NOT ACCOUNT FOR SPLICES. CONTRACTOR MAY ADD SPLICES AS NECESSARY, BUT PAYMENT WILL NOT BE MADE FOR EXTRA LENGTH REQUIRED FOR SPLICES. SEE DETAIL ON SHEET 24.
- ② INCLUDED IN CONTRACT UNIT PRICE OF DRILLED SHAFT.

S.H. 44 OVER ELK CREEK		KIOWA COUNTY		Design	AFW	
PIER DETAILS		SHEET 1 OF 2		Detail	DRB	
				Check	AFW	
				WHITE ENGINEERING ASSOCIATES		
STATE OF OKLAHOMA		DEPARTMENT OF TRANSPORTATION		JOB PIECE NO. 28999(O4)		
				SHEET NO. 23		